

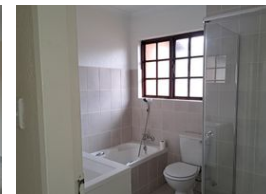


Nolan Harwood
083 308 0056
nolan.harwood@rentalsdc.co.za

Contact Rentalsdotcom West

011 7642449

85 Mimosa street
Helderkruin
Roodepoort
1733



R7,900 pm

Lease Period 12 months **Availability** 01 Nov 2025 **Deposit** R10,400
Annual Escalation -

2 1

Lovely 2bed 1.5 bath Duplex Townhouse with covered parking - Weltevreden Park

A young couple looking for a new secure cozy 2-bedroom Townhouse that offers a comfortable lifestyle with a sparkling communal pool / Braai area in a small complex that offers easy access to all essential amenities right next to Palm Court Shopping Centre, good schools, and transportation options. This Lovely Duplex Townhouse offers:

Upstairs:

2 Bedrooms: Both have Laminated Floors and spacious Built-in-Cupboards. Main Bedroom has access to a balcony.

1x Full modern fitted Bathroom with a shower, Bath, Basin & Toilet and a Guest Bathroom downstairs with a Basin and Toilet.

Note: Staircase leading to upstairs Bedrooms are quite narrow and steep.

Ground Floor:

Beautifully tiled Kitchen with an open nook / counter and space for 1x water appliance connection and a fridge.

Spacious Open Plan Lounge with Fibre ready (Vumatel)...

Features

Interior		Exterior		Sizes	
Bedrooms	2	Carports / Parkings	2	Floor Size	113m ²
Bathrooms	1	Security	Yes	Land Size	7,339m ²
Kitchens	1	Pool	Yes		
Recep. Rooms	1	Views	False		
Furnished	No				

Extras

Security Gate Totally Fenced Garaging / Carparking: Off Street Security: Electric Fencing
Security: Intercom Living Area: Open Plan Kitchen: Under Counter Oven Main Bedroom: Double
Main Bedroom: Built-in-robe Bedroom 2: Single Bedroom 2: Built-in / Wardrobe Main Bathroom:
Bath Main Bathroom: Shower Over Bath Water Supply: Town Supply Locality: Close To Schools
Locality: Close To Shops Locality: Close To Transport

