



Sheree Wedlake
066 245 1245
buffalocityagent@rentalsdotcom.co.za

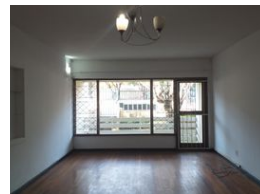
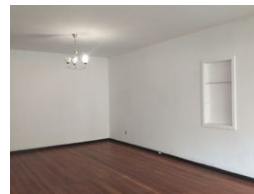
Contact Rentalsdotcom Buffalo City

043 7431410

32 Bonza Bay Road
Beacon Bay North
East London
5205



Web Ref RL20913



R7,000 pm

Lease Period 12 months
Annual Escalation -

Availability Immediately

Deposit R8,000

2 1

Explore this spacious 2-bedroom flat nestled in Chislehurst, East London.

Relax in the privacy of your own lounge and dining area. The kitchen is well-fitted with ample counter space for your culinary endeavors.

Both bedrooms offer wooden floors, lending a cozy, rustic ambiance, along with built-in cupboards to accommodate your storage needs.

Convenient undercover parking ensures hassle-free vehicle accommodation.

Please note the following with regards to finances:

Rent: R 7 000.00
Damage Deposit: R7 000.00
Service Deposit: R 1 000.00
Lease fee: R 1 000.00

The rental excludes municipal services (fire, refuse, sewer) and water.
Electricity is pre paid - the NEW BCMM Supply charge of R432.40 will also be billed to the tenant.

Features

Interior

Bedrooms	2
Bathrooms	1
Kitchens	1
Recep. Rooms	2
Furnished	No

Exterior

Carports / Parkings	1
Security	No
Pool	No
Views	False

